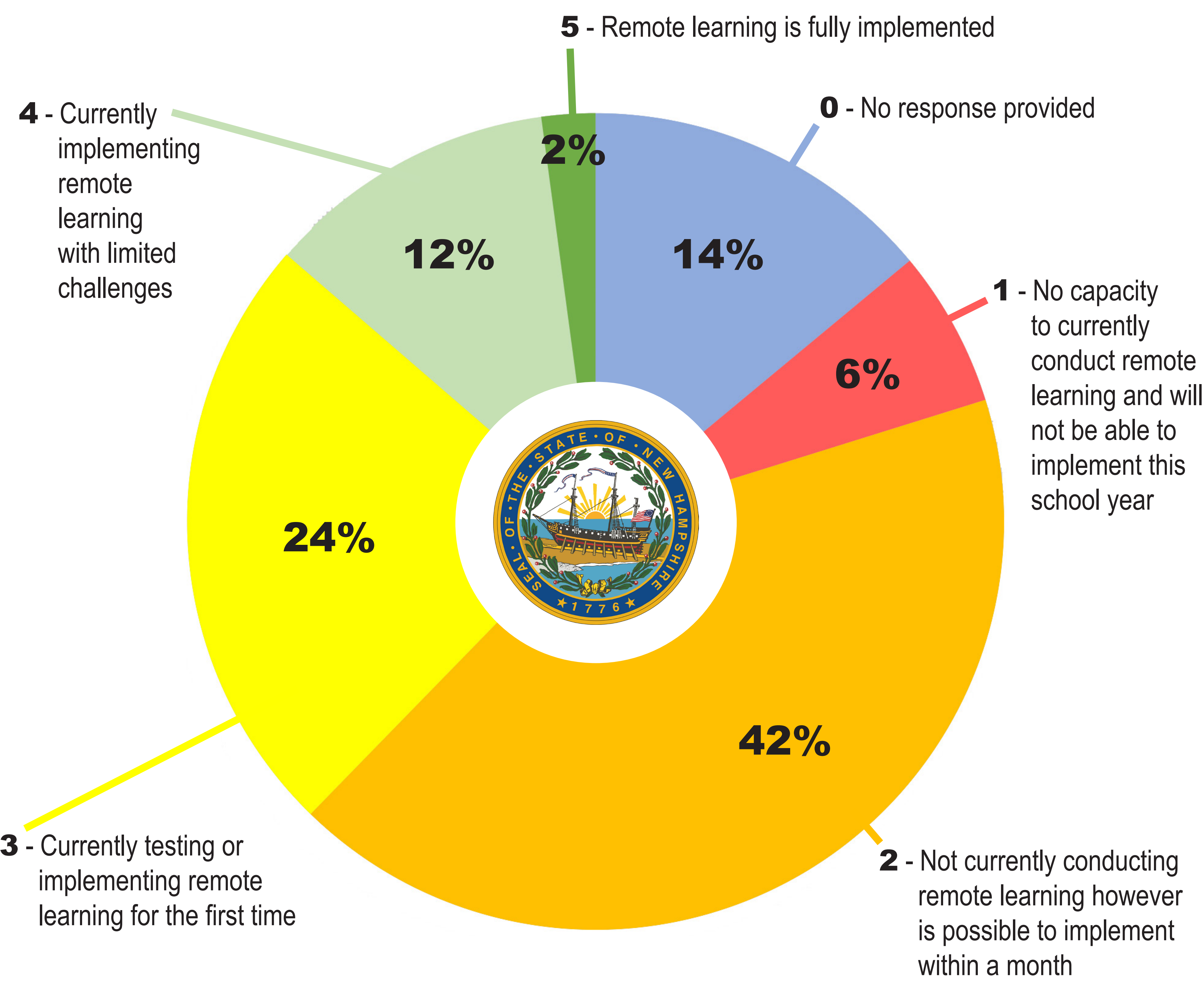


COVID-19

Statewide Remote Learning Readiness



District and Chartered Public Schools	Kindergarten	Elementary	Middle	High	Total	Percent
State Enrollment Totals	11,689	72,454	32,246	55,261	171,650	
0 - No response provided	1,775	12,238	3,032	6,935	23,980	14%
1 - No capacity to currently conduct remote learning and will not be able to implement this school year	743	3,946	2,456	3,523	10,668	6%
2 - Not currently conducting remote learning however is possible to implement within a month	5,173	30,593	15,653	20,852	72,271	42%
3 - Currently testing or implementing remote a learning for the first time	2,661	17,757	6,893	13,985	41,296	24%
4 - Currently implementing remote learning with limited challenges	1,337	7,869	4,172	6,411	19,789	12%
5 - Remote learning is fully implemented	-	51	40	3,555	3,646	2%